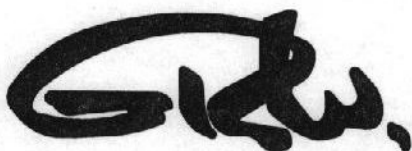
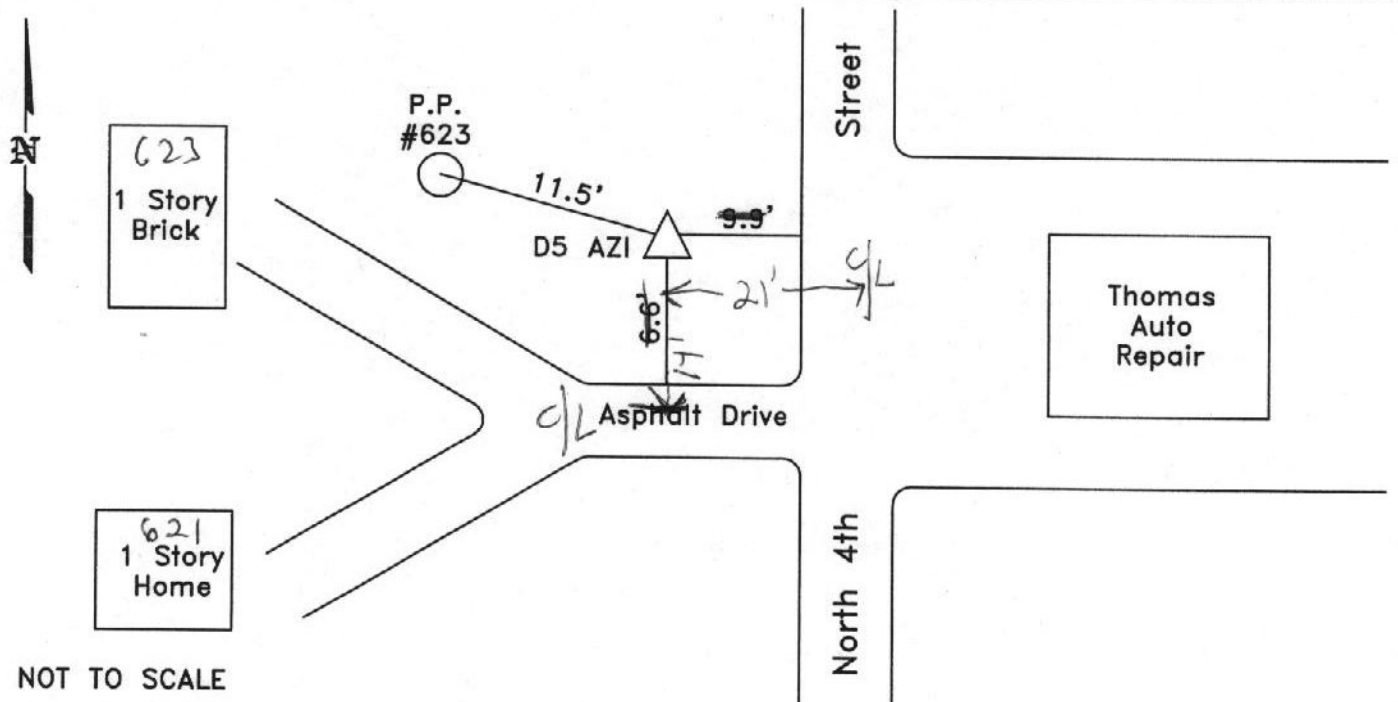


CITY OF MURRAY CONTROL MONUMENT CARD

DESIGNATION: D5 AZI
TYPE: CONCRETE MONUMENT W/ CITY DISK
DATE SET: JUNE 2002 QUAD: MURRAY, KY.
HORIZONTAL DATUM: NAD-83 VERTICAL DATUM: NAVD-88
STATE: KENTUCKY COUNTY: CALLOWAY ZONE: KY. S 1602

NORTHING: 1755082.08 FT
EASTING: 891510.05 FT
ELEVATION: 513.01 FT (GPS)
LATITUDE: N 36°37'13.75696" LONGITUDE: W 088°18'07.52582"
SCALE: CONVERGENCE:
PLANE AZI. TO AZI. MARK:

To Reach: From the intersection of Chestnut Street and North 4th Street, go north along North 4th Street for 0.2 mile to the station on the left.



GRW Aerial Surveys, Inc.
801 Corporate Dr. Lexington Ky. 40503
(859)223-3999